



The unisex dry handfeel jogger

Relaxed Fit

XXS → 3XL

400 GSM

Description

Self fabric elasticated waistband and leg cuff opening
 Flat drawcords in matching body colour with end folded for clean finish
 Drawcord placement at inside waistband
 Embroidered eyelets
 Front welt pockets
 Patch pocket at back
 Side seam and leg cuff with double needle topstitch

Composition

Shell - French Terry
 100% Cotton - Organic Ring Spun Carded - 400.0 GSM
 Dry Handfeel

Care instruction

Wash similar colours together, no ironing on print, wash and iron inside out.



Country of origin

Weaving : Bangladesh
 Dyeing : Bangladesh
 Assembly : Bangladesh

Colors



Black
C002



Desert
Dust
C028



Aloe
C089



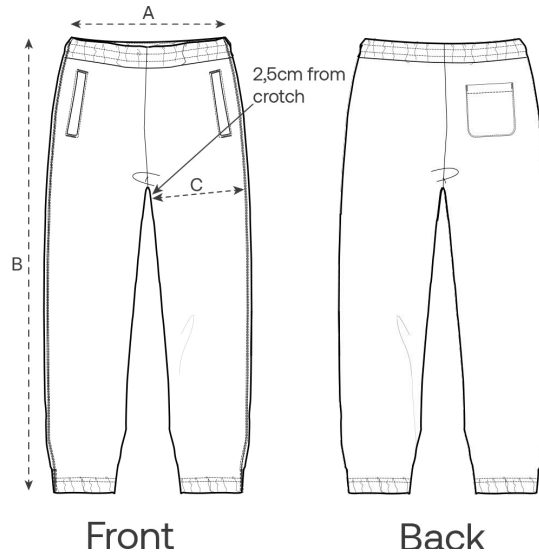
French
Navy
C727

Essential Heathers



Heather
Grey
C250

Size Guide



Measurement in cm	XXS	XS	S	M	L	XL	XXL	3XL
A - Waist	35	37	39	41	44	47	50	53
B - Leg Length	97	99	101	103	105	107	109	109
C - Thigh	29.5	30.5	31.5	32.5	34	35.5	37	38.5

Packing

Sizes	XXS	XS	S	M	L	XL	XXL	3XL
Pieces / bag	5	5	5	5	5	5	5	5
Pieces / box	10	20	20	20	20	20	20	10

Environmental impact

Please note that the table below shows data for an adult in size M.

Carbon emission in Kg CO ₂ eq	Natural Raw	Eco-heather	Whites & Colours	Heathers*
From cradle to gate ¹	-	-	7.74	7.84
From cradle to grave ²	-	-	15.42	15.52

Water usage in m ³	Natural Raw	Eco-heather	Whites & Colours	Heathers*
From cradle to gate ¹	-	-	3.71	3.97
From cradle to grave ²	-	-	7.47	7.74

1 - From the extraction of raw materials to the point it leaves the manufacturer. 2 - From the extraction of raw materials to the product end-of-life. * Except Heather Haze