

**JRC**James Ross Collection  
WeAr the Future

# James Ross Collection

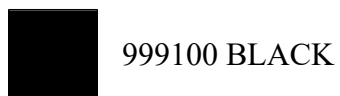
SCHEDA TECNICA

**JRC**James Ross Collection  
WeAr the Future

## Polo Stresa Lady

**Polo in TACTEL® 4-way stretch fabric**

- Fabric: 100% polyamide
- Breathability: 23,000 g/m<sup>2</sup>/24h
- Quick-drying
- No label
- Three buttons in matching color
- Internal neck reinforcement tape in matching color
- Collar and sleeve hem in elastic rib
- Side slits
- Individually packed
- Sun protection UPF 50+

**S - M - L - XL****Colors and item codes:**

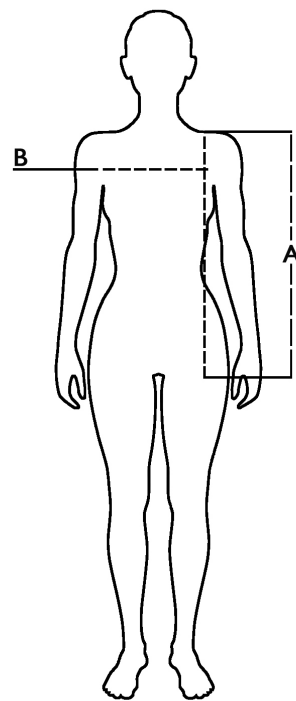
999100 BLACK





999101 WHITE

**Size table**

Taglie / Sizes (+/- 5%)	A lunghezza / front length	B torace / chest
S	60	45,5
M	62	47,5
L	64	49,5
XL	66	51,5

**Technical description**

	Composizione / Fabric Composit	 g/m <sup>2</sup>
Tessuto esterno/Shell	100% Nylon	190
Imballo/Packages	 40 pcs	
Istruzioni di Lavaggio / Care Label	